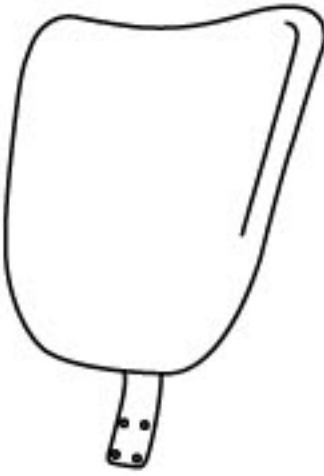
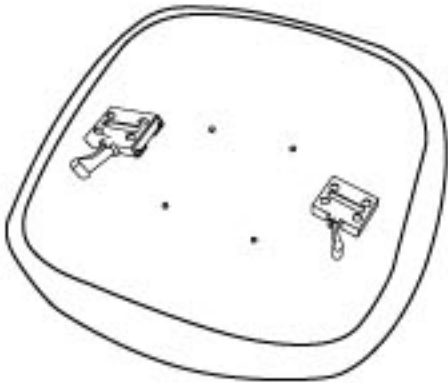
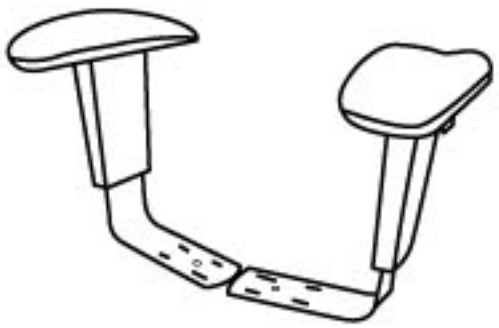

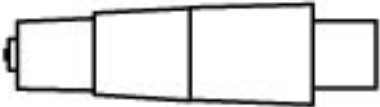

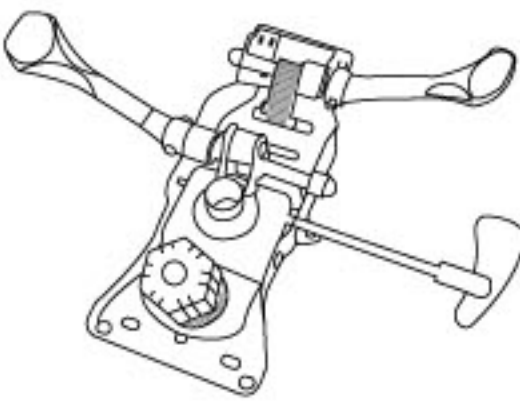

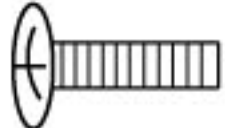
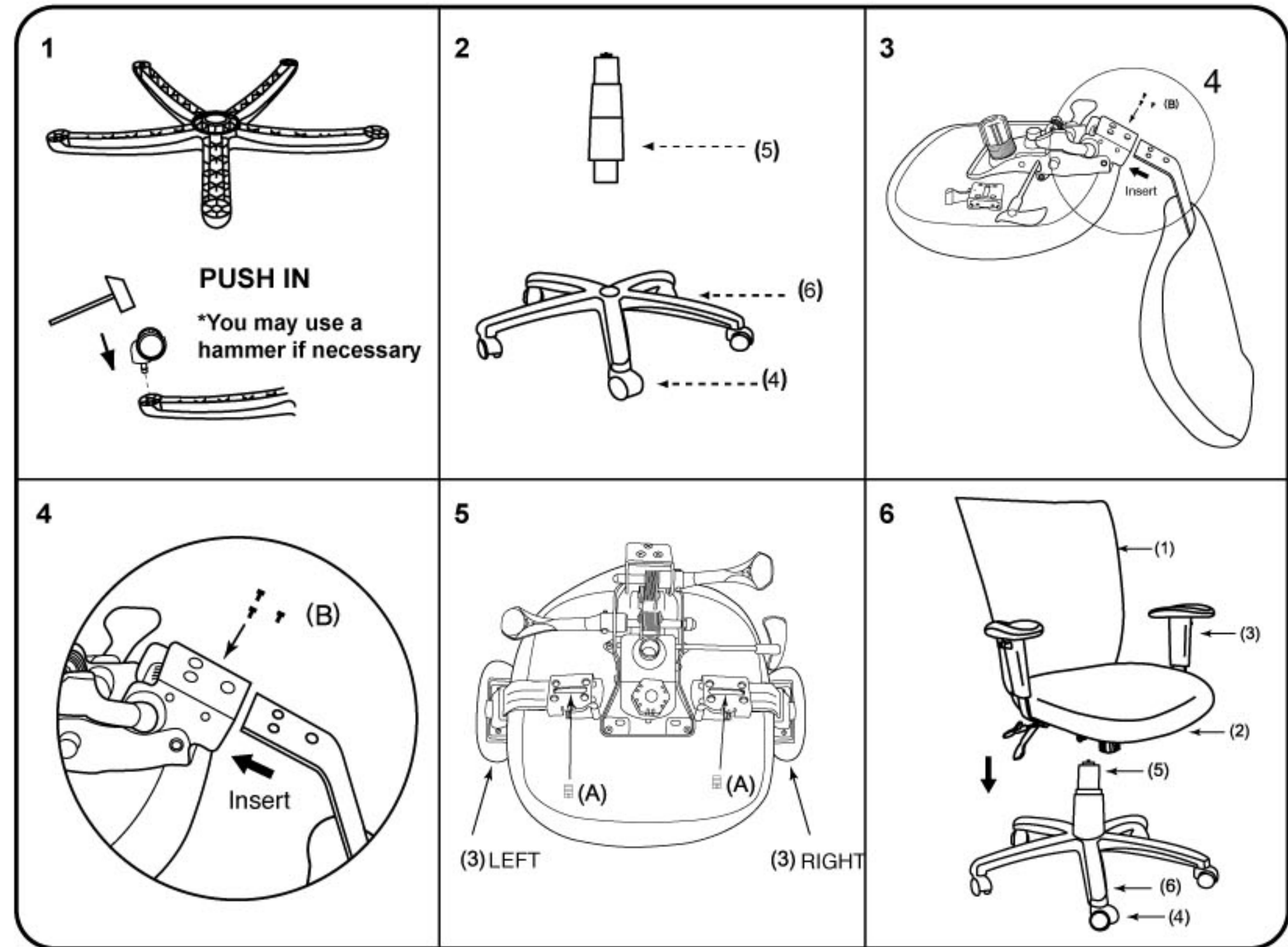


MODEL : 750 756

(1)x1	(2)x1	(3)x1 (L)x1 (R)
		
TU750 756-B Back Cushion	TU750 756-S Seat Cushion	TU1002-ARM-L Left-Arm TU1002-ARM-R Right-Arm
(4)x5	(5)x1	(6)x1
		
TU015 Caster	TU026 Gas Lift W/ Cover	TU005 Nylon Base
(7)x1	<p>Customer Service Hotline: 1-800-593-1888</p> <p>For further assembly instructions, please visit our web site at www.boschair.com</p>	
		
YM8630 Mechanism		
(A)x2		3/8" SCREW
(B)x3		5/16" x 1" L-BAR SCREW



It is important to assemble all parts so that the directional "Arrows" point in the same direction. Make certain that all screws are FULLY tightened before using the chair. Each month, check all screws and tighten any that may have loosened.

Warning: Do not stand on the seat for any purposes

